

## LINEAR LED LIGHTING SYSTEM - LE7035-W & LE7055-W

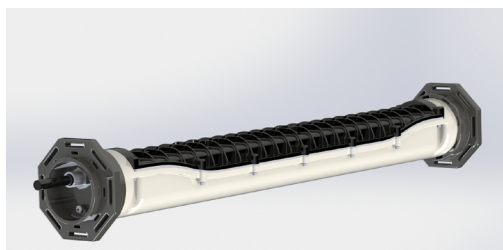
Lind Equipment's linear LED string lights are highly versatile portable lighting fixtures that provide bright white light and are built with military grade materials

### KEY FEATURES

- Durable 35W & 55W LED lights
- String together up to 16 lights on a single circuit
- IP65 rated for use in wet and dusty environments
- Shock and vibration tested to military standards
- Field deployed and tested for military and civilian applications
- Can be used at either 110V or 240V

### OPTIONAL ADVANCED FEATURES

- Instant on night vision green black out mode
- Military standard EMI protection
- Advanced emergency lighting mode
- -51°C cold weather version
- The light can be controlled to 0% / 25% / 50% / 100% of maximum light levels



### INDUSTRIES/APPLICATIONS

- Portable shelters
- Tunnel construction and maintenance
- Aircraft maintenance
- Transit vehicle maintenance
- Event lighting
- Mining

### SPECIFICATIONS

	LE7035 Series	LE7055 Series
<b>Voltage</b>	120 / 240 V	120 / 240 V
<b>Wattage</b>	35W	55W
<b>Light Temperature</b>	4500K (bright white light • no blue tint)	4500K (bright white light • no blue tint)
<b>Lumen Output</b>	3500	5500
<b>Construction</b>	Aluminum housing, polycarbonate lens, rubberized end caps	Aluminum housing, polycarbonate lens, rubberized end caps
<b>Dimensions</b>	32" x 6"	36" x 6"
<b>Weight</b>	6 lbs	8 lbs
<b>Weatherproof Rating</b>	IP65	IP65

